



3450 W. 131st. Street
Westfield, IN 46074

Phone: 317-733-2855
Fax: 317-733-2053

CITY OF CARMEL
STANDARD DETAILS

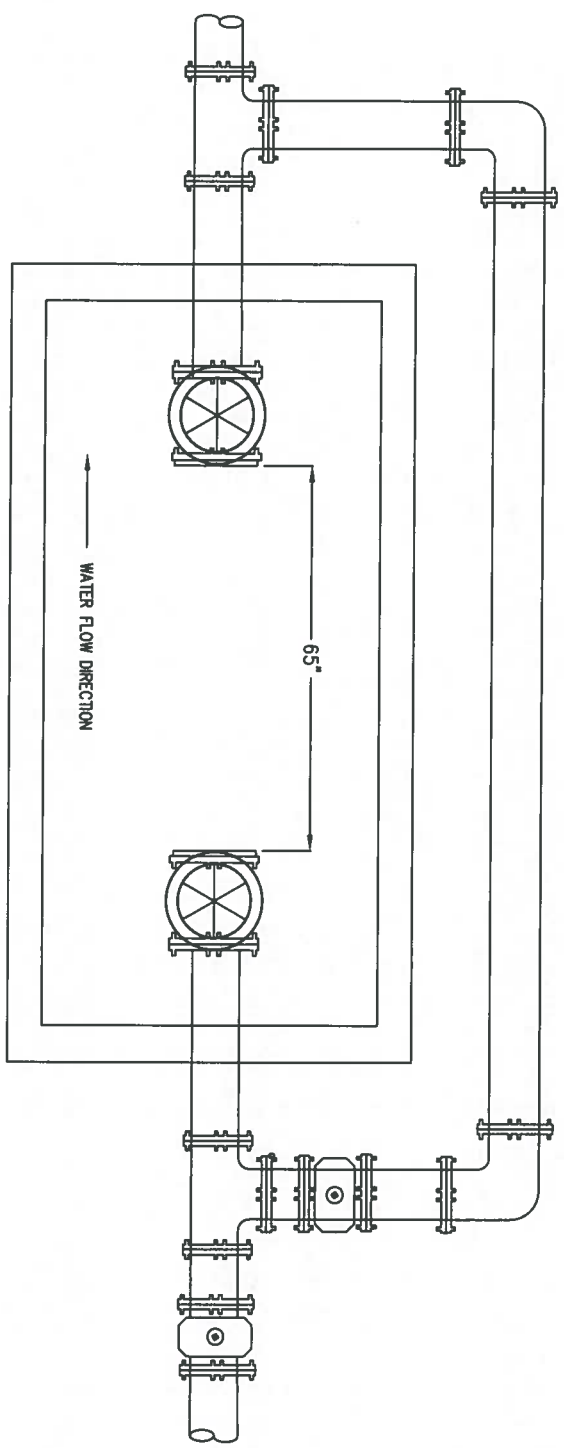
Date: May 2012

Scale: No Scale

TITLE:
BYPASS FOR
METER VAULT

Drawn By: Crossroad Engineers

Drawing Name: CW C



3450 W. 131st. Street
Westfield, IN 46074

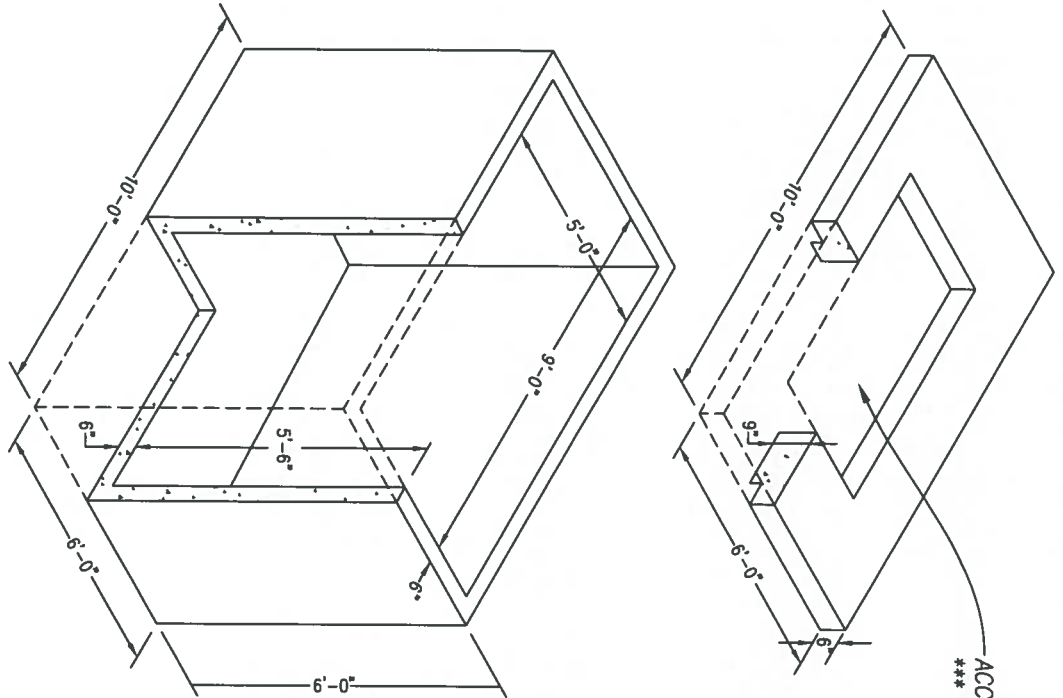


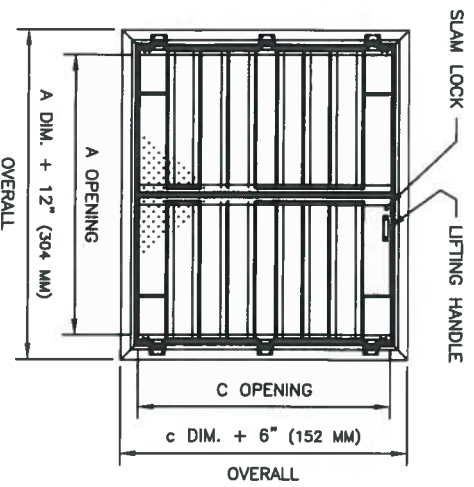
Phone: 317-733-2855
Fax: 317-733-2053

CITY OF CARMEL
STANDARD DETAILS

TITLE:
WATER VAULT
DETAIL

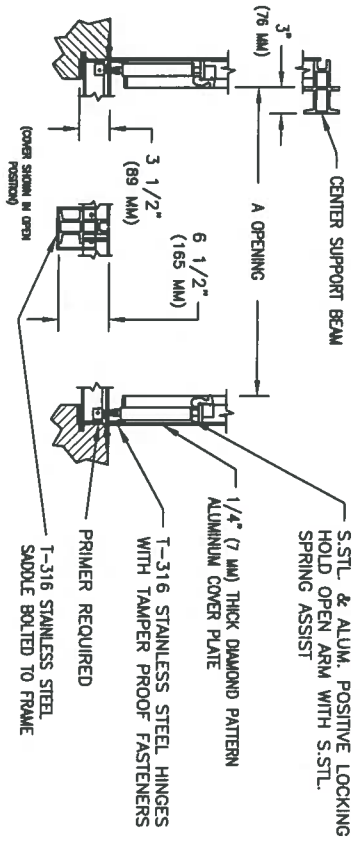
Date: March 2019
Scale: No Scale
Drawn By: Crossroad Engineers
Drawing Name: CW A





- STANDARD FEATURES:**
- AUTO-LOCK T-316 STAINLESS STEEL HOLD OPEN ARM WITH RELEASE HANDLE
 - T-316 STAINLESS STEEL HINGES AND ATTACHING HARDWARE
 - T-316 STAINLESS STEEL SLAM LOCK WITH REMOVABLE KEY
 - STAINLESS STEEL COMPRESSION SPRING ASSIST
 - DOUBLE LEAF CONSTRUCTION
 - H20 LOAD RATING (SEE NOTES)
 - EXTRUDED ALUMINUM FRAME
 - RECESSED LIFTING HANDLE
 - LIFETIME GUARANTEE

A DIM INCHES (A)	C DIM INCHES (MM)	UNIT WT. LBS. (KG.)
72 (1829)	48 (1219)	305 (138)



S.S.T.L. & ALUM. POSITIVE LOCKING HOLD OPEN ARM WITH S.S.T.L. SPRING ASSIST

1/4" (7 MM) THICK DIAMOND PATTERN ALUMINUM COVER PLATE

T-316 STAINLESS STEEL HINGES WITH TAMPER PROOF FASTENERS

PRIMER REQUIRED

T-316 STAINLESS STEEL SADDLE BOLTED TO FRAME

- NOTES:**
- 1) SUITABLE FOR USE IN OFF STREET LOCATION WHERE NOT SUBJECTED TO HIGH DENSITY TRAFFIC.
 - 2) PROVIDE A FULL BED OF CLASS "A" CONCRETE UNDER FRAME AND SUPPORT ANGLES.



3450 W. 131st. Street
Westfield, IN 46074

Phone: 317-733-2855
Fax: 317-733-2053

CITY OF CARMEL
STANDARD DETAILS

TITLE:
ACCESS DOOR
DETAIL

Date: May 2012 Scale: No Scale Drawn By: Crossroad Engineers Drawing Name: CW B

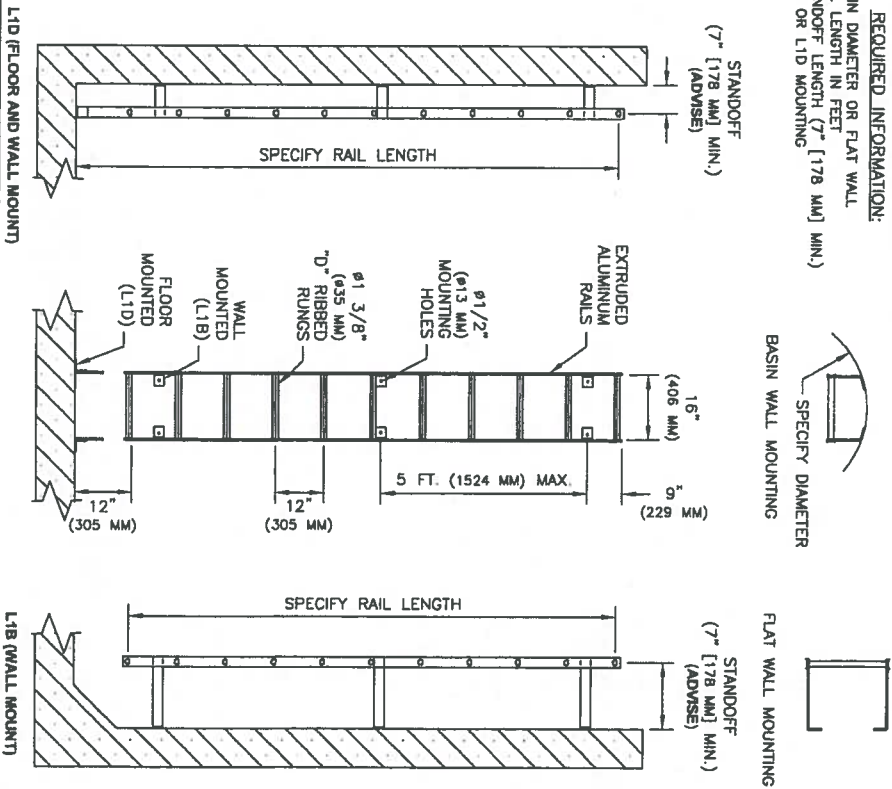
SERIES L1B and L1D LADDERS

STANDARD FEATURES:

- ALL ALUMINUM WELDED CONSTRUCTION
- 1 3/8" TYPE "D" RUNG WITH FLAT SLIP RESISTANT SURFACE
- CUSTOM FIT WALL MOUNTED STANDOFFS
- FLOOR AND WALL OR WALL-ONLY MOUNTING (SPECIFY)
- FLAT OR ROUND WALL MOUNTING (SPECIFY)
- AVAILABLE IN WELDED STAINLESS STEEL CONSTRUCTION

REQUIRED INFORMATION:

- BASIN DIAMETER OR FLAT WALL
- RAIL LENGTH IN FEET
- STANDOFF LENGTH (7" [178 MM] MIN.)
- L1B OR L1D MOUNTING



3450 W. 131st. Street
Westfield, IN 46074

Phone: 317-733-2855
Fax: 317-733-2053

CITY OF CARMEL
STANDARD DETAILS

TITLE:
L1B AND L1D
LADDERS

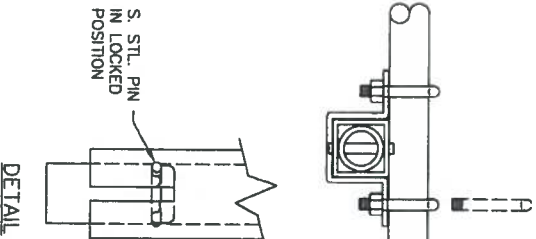
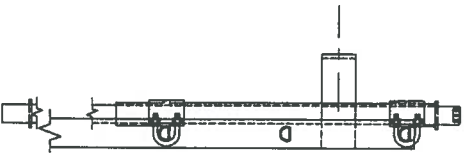
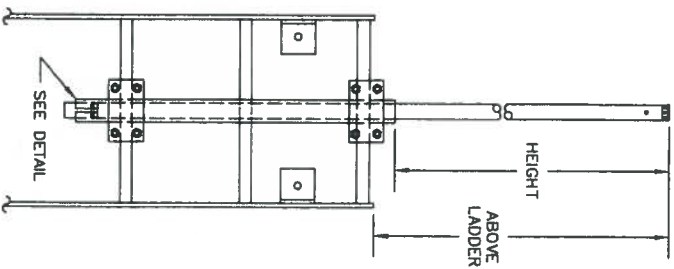
Date:	March 2019	Scale:	No Scale	Drawn By:	Crossroad Engineers	Drawing Name:	CW D
-------	------------	--------	----------	-----------	---------------------	---------------	------

SERIES L1E LADDER EXTENSION

STANDARD FEATURES:

- EASY TO INSTALL ON ALUMINUM OR STAINLESS LADDERS
- SECURE LOCKING IN THE EXTENDED POSITION
- LIGHT WEIGHT OPERATION
- ALL ALUMINUM AND STAINLESS STEEL CONSTRUCTION
- ALSO AVAILABLE IN ALL TYPE 304 OR TYPE 316 S.STL.

MODEL	HEIGHT	ABOVE LADDER	MIN. TANK DEPT.
A	37"	42"	73"
	(940MM)	(1067MM)	(1854MM)
B	34"	39"	55"
	(864MM)	(991MM)	(1397MM)



DETAIL

INSTALLATION & OPERATION INSTRUCTIONS

Installation:

- Place ladder flat on the ground with standoffs up.
- Place 2" (52 mm) square aluminum tube in center of rungs with the T-shaped slot below third rung as shown. (Model A) or second rung (Model B).
- Place stainless steel channel clamp over square aluminum tube so "U" clamp holes line up on either side of rung as shown.
- Insert stainless steel "U" bolts over rung and through holes in stainless steel channel clamp as shown.
- Apply 10-15 foot pounds (1.3-2.1 kg/meter) of torque to all "U" bolt nuts.
- Verify that square aluminum tube is secured to ladder rungs.

Operation:

- To engage ladder extension, grasp aluminum post above the top stainless steel channel clamp, and pull straight up until lower stainless steel pin is seated.
- Rotate aluminum post 1/4 turn in either direction to secure pin in slot as shown in Detail.

NOTES:
PIN MUST BE IN LOCKED POSITION PRIOR TO OPERATION.

City of
Carmel Utilities

3450 W. 131st. Street
Westfield, IN 46074

Phone: 317-733-2855
Fax: 317-733-2053

CITY OF CARMEL
STANDARD DETAILS

TITLE:
L1E LADDER
EXTENSION

Date: March 2019

Scale: No Scale

Drawn By: Crossroad Engineers

Drawing Name: